

EvoLUtion

REEFER



Innovative solutions for
refrigerated transport



more info at
www.lecitrailer.com



LeciTrailer

DIMENSIONS

- › **Length:** 13.600 mm.
- › **Width:** 2.600 mm.
- › **Total Height:** 4.050 mm.
- › **Coupling Height:** 1.100 mm.
- › **Distance to King-Pin:** 1.600 mm.
- › **Net weight:** 7.600 Kgs. (without cooling equipment, with pallet carrier, with 2 PVC drawers and aluminium floor).

STRUCTURE

- › Main beams in twin T-shape, manufactured of high tensile steel.
- › Swan neck 10 mm. as per ISO 1726
- › Steel rear bumper.
- › Full stainless steel rear frame.
- › **Option:** Reinforced structure for Ferry application.

AXLES / SUSPENSION

- › 3 axles. Disc brakes.
- › Full air-suspension, actuated by 5 way valve.

BRAKES

- › Homologated CE double brake circuit installation.
- › ISO pneumatic coupling heads with built-in filters.
- › EBS with 1 sensor axle. RSS (Rolling Stability System).

TYRES

- › 7 tyres. 385/65 R 22.5. Size.
- › Spare wheel holder, roller type.

LANDING LEGS

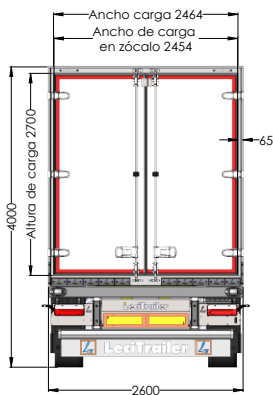
- › 2 speed mechanical.

ELECTRICAL INSTALLATION

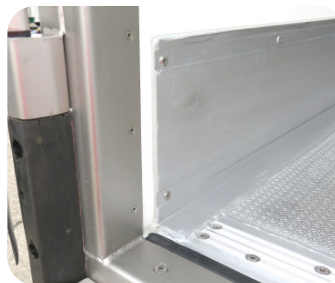
- › 24 V. Armoured electrical installation.
- › 3 ISO plugs: 2 of 7 pin and 1 of 15 pin.
- › Rear lights with seven positions and registration plate holder.
- › Reverse warning sound device.
- › Side marker lights
- › 3rd brake light integrated in rear header, central.

FINISHING

- › Metal chassis structure shot blasted with SA 21/2 quality.
- › Protection treatment against rust of the chassis by complete immersion and electro-deposition cathode (KTL) with nano-technological conversion. This challenging latest generation process guarantees a uniform layer on the entire surface of the 50 micron KTL printing chassis.
- › Finishing with acrylic-polyurethane enamel (two-component painting) in RAL colour to be agreed and dry in temperature controlled oven.



Stainless frame and 3 fun sequential top marker lights



Thermal break rubber and aluminium profile for floor access



Reinforcement on front corner



Aluminium floor, aluminium skirting and load-bearing rails



Stainless steel connection bracket, and rubber plate lead up



Reinforced rear



Rear rubber vertical side, protected by sheet metal

BODY

- › **Internal Height:** 2.700 mm.
- › Side panels and roof reinforced with "Z" fibreglass.
- › Side panels and roof sandwich type in polyurethane foam of 40 kg/m³ and reinforced fibreglass polyester, 65mm thickness in side walls and 85 mm. in roof.
- › Polyester floor with fibreglass reinforced, and anti slip "Top Coat".
- › Aluminium inside skirting 240 x 5 mm.
- › Aluminium profile assembled.
- › Stainless steel rear frame.
- › Double rear door with stainless steel hinges.
- › Stainless steel locks.
- › 1 lashing rail at 1200 mm, height on each side.

ACCESSORIES

- › Water tanks, extinguisher box, 2 PVC tool box 800 mm, wheel blocks.
- › Anti projection system according to current regulations.
- › Collapsible side guard rails.
- › Rear buffers and roller buffer.
- › 3 led lamps integrated in roof.
- › Internal frige protection.
- › Horizontal load retaining bar.
- › Rear entry aluminium plate. Foldable rear ladder.
- › Reflective conspicuity markings.

OPTIONAL EQUIPMENT

- › Cooling equipment. Diesel tank. Thermograph. Evaporators.

OPTIONS

- › Anti slip aluminium floor.
- › Steel bumpers.
- › Loadingbay approach auto braking system.
- › Double locking system within rear door.
- › Security locking system.
- › Additional side panels lashing rails.
- › Roof lashing rail.
- › Water drainage.
- › Ventilation flaps. › External frontal corner reinforced.
- › Horizontal goods transport blocking bar.
- › Pallet carrier box.